

# THE GREATER SUDBURY POLICE SERVICE

Criminal Investigations Division  
Integrated Crime Section  
Drug Enforcement Unit (DEU)



# GREATER SUDBURY POLICE

Common drug seized in Sudbury



# SUPPLY REDUCTION: Seizures in 2024

## DEU & UNIFORM PATROL

In 2024, DEU seized: 3 kilograms of cocaine/crack cocaine, 485 grams of crystal meth, 705 grams of fentanyl, 1003 methamphetamine tablets and 819 prescription pills.

705 grams of fentanyl

1378 grams of fentanyl

In 2024, Patrol seized: 3.2 kilograms of cocaine/crack cocaine, 837 grams of crystal meth, 1378 grams of fentanyl, 2111 methamphetamine tablets and 40 prescription pills.



# FENTYNAL: In Our Community

## The Fallout Ripple Effects



Home  
Invasions

Robberies

Fraud

Break &  
Enters

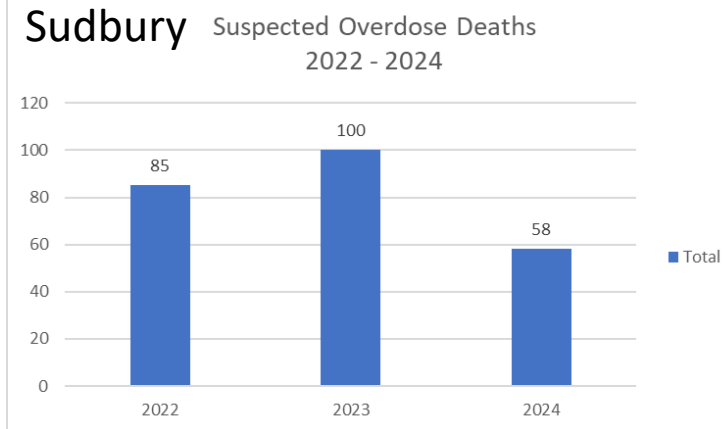
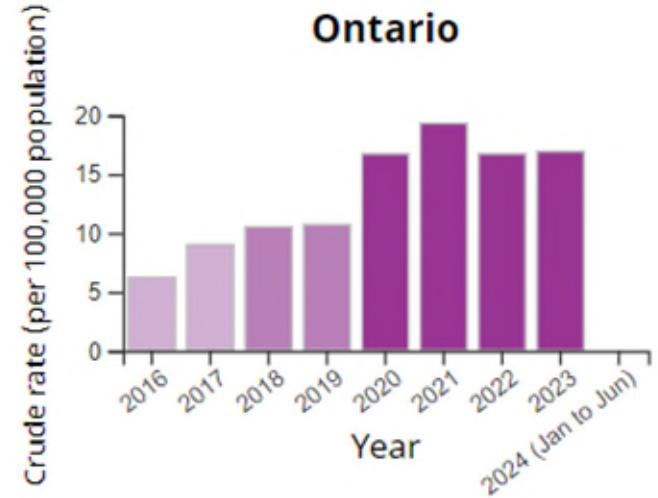
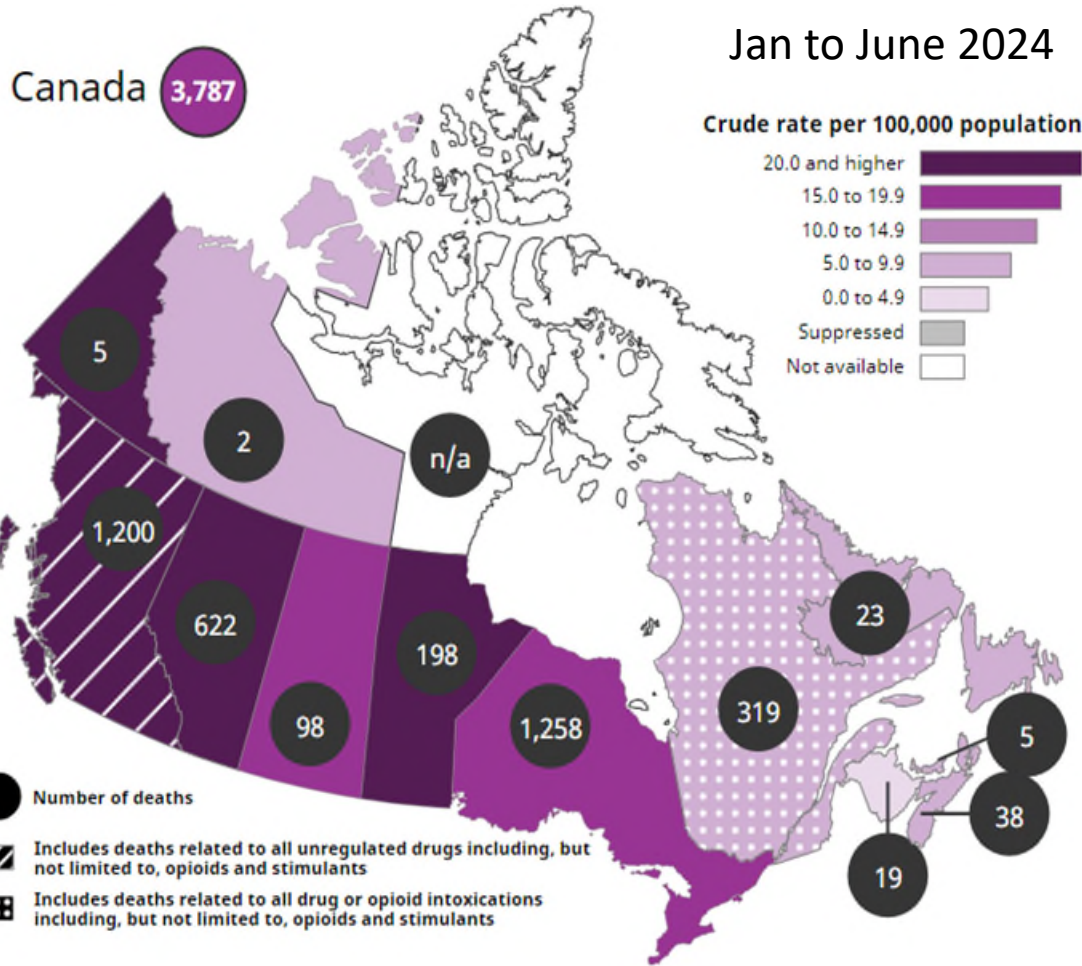
Human  
Trafficking

Death &  
Disease



# How do we compare?

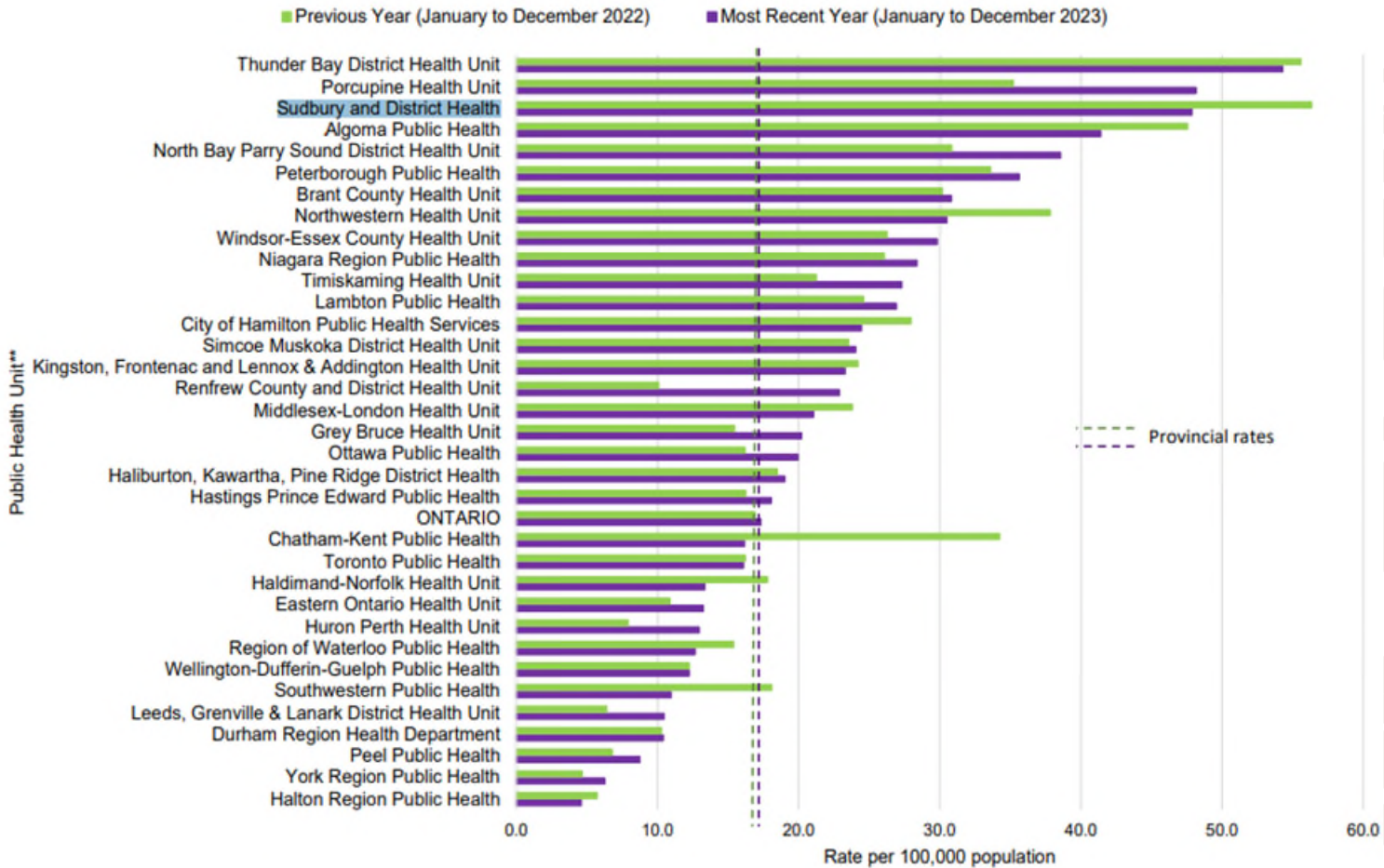
## The Fallout



# How do we compare?

## Opioid toxicity mortality rate by PHU region - Annual

Most recent two years of data available\*



Source: Office of Chief Coroner (OCC) - Data effective April 29, 2024.

\*includes both confirmed and probable opioid-related deaths, preliminary and subject to change

\*\*based on location of incident





## A SHARED COMMITMENT

GPS has a multi-dimensional approach to the crisis

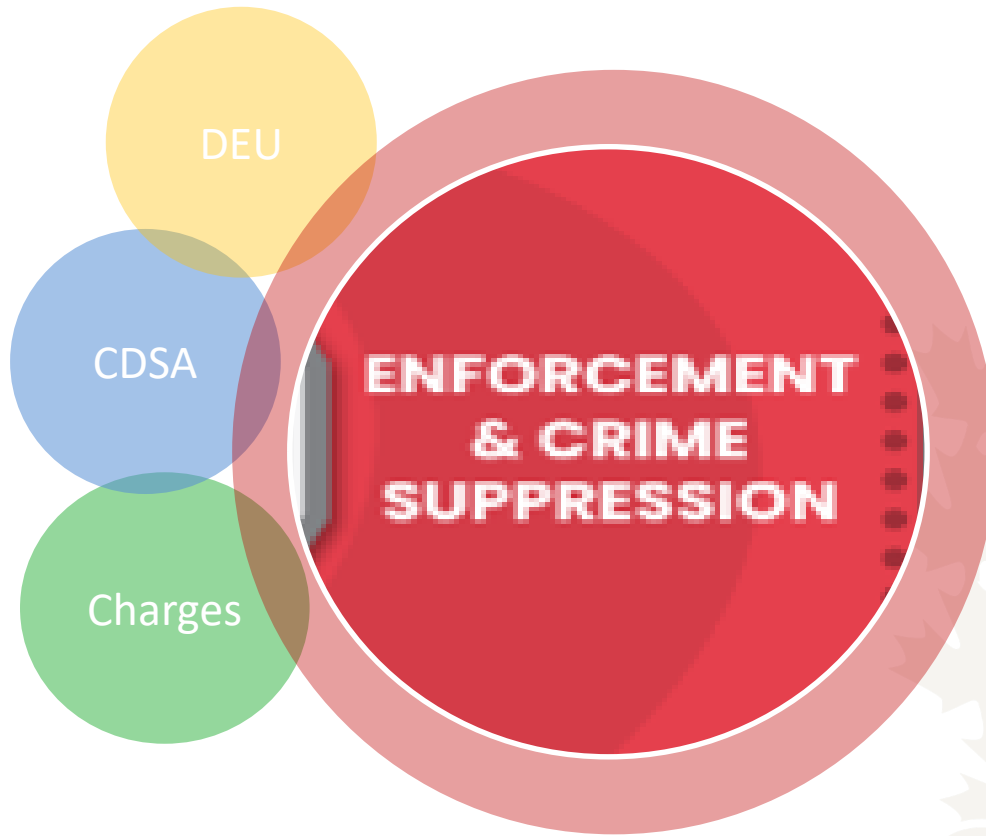


# GREATER SUDBURY POLICE





# GREATER SUDBURY POLICE



COMPLEX INVESTIGATIONS



CONFIDENTIAL  
INFORMANTS



CRIMESTOPPERS



SOPHISTICATED  
INVESTIGATIVE  
TECHNIQUES

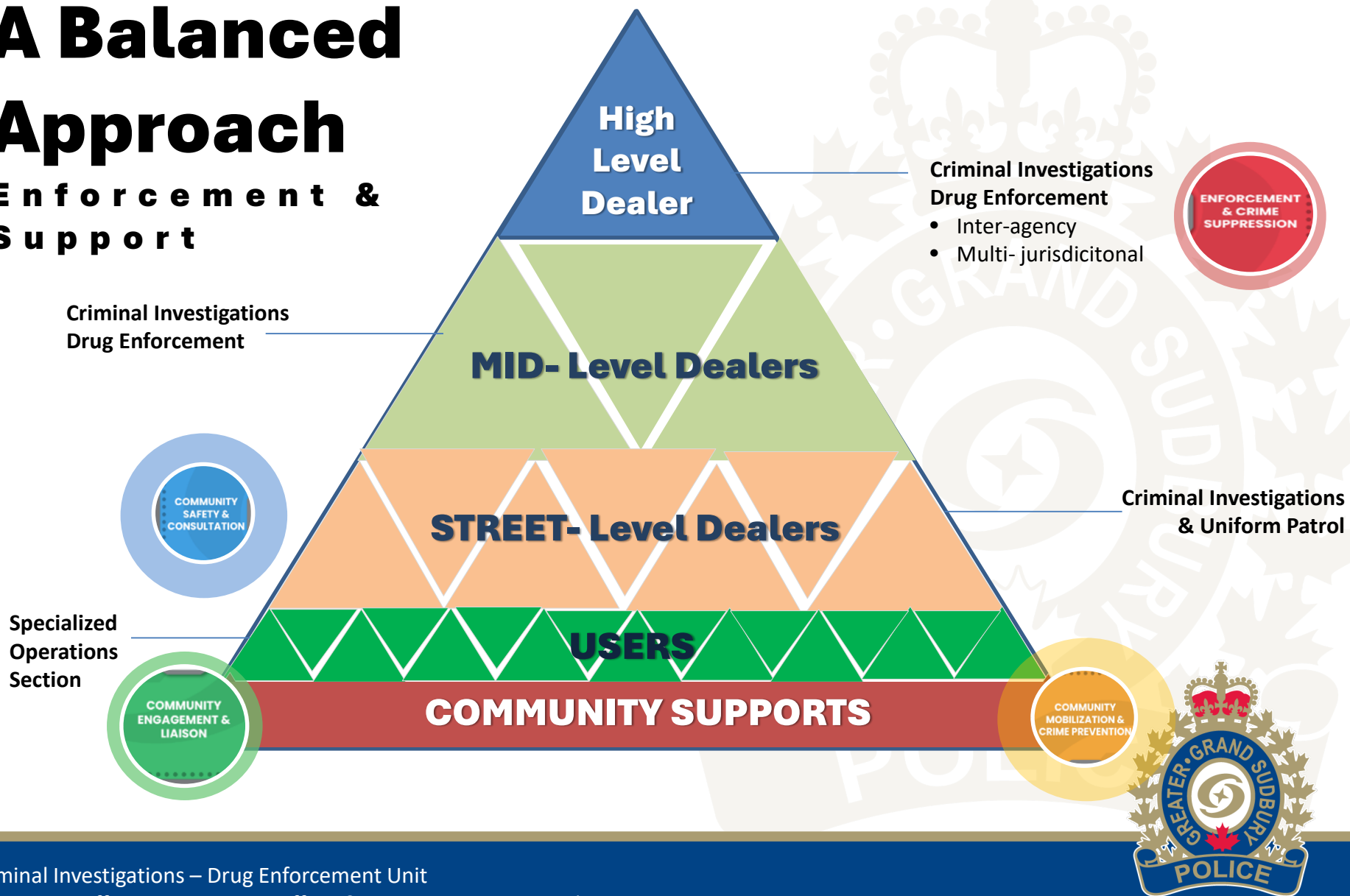


JOINT FORCES



## A Balanced Approach

### Enforcement & Support



# COMMUNITY PARTNERS

COMMUNITY  
ENGAGEMENT &  
LIAISON

## Community Engagement and Liaison



Community Drug  
Strategy

City of Greater  
Sudbury (By-law,  
Housing).

Public Health  
Sudbury and  
Districts.

Canadian  
Mental Health  
Association

Sudbury District  
Restorative  
Justice

VALE

Sudbury  
Rainbow  
District School  
Board

Reseau Access  
Network

Sudbury Centre  
for Transitional  
Care



# QUESTIONS

